

FTA CARD SAMPLING

(Abridged from [Euroblight sampling protocols](#))

Sampling overview

1. Use **1 card** with 2 sampling areas (circles) **per field**.
2. **Sample 2 lesions per infected field**, 1 lesion for each sample area (circle), preferably from the same plant.
3. **Take the sample (instructions below)** Do not touch the sampling area except with the *Phytophthora* sample!
4. **Air-dry the card**, store and **return card** to your local coordinator.

Sampling

Experience has shown that **sampling is the most critical process**. Time spent sampling correctly is well spent!

Select:

Select a leaflet with a single, fresh, nicely sporulating lesion for each sample (Figure 1). Both samples may come from the same plant.



Figure 1. Select a leaflet with a single lesion.

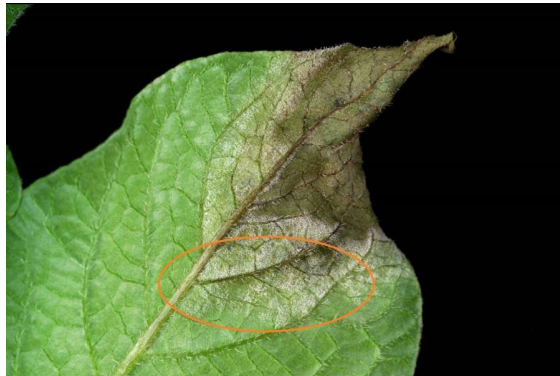


Figure 2. Select a fresh, sporulating area of the lesion and cut a sample 1-2 cm² from the area indicated.

Avoid:

Dead leaves, old or dry lesions, leaflets with many lesions
Wet, water soaked (bacterially infected) looking leaves
Small restricted lesions

Collect sample on FTA card:

Cut a 1-2 cm² piece of **sporulating lesion (Figure 2)**

Place the lesion sample inside a clean circular sampling area on the FTA matrix. **Sporulating side facing down.**

Replace the cover sheet.

Apply moderate pounding/pressure to the leaf sample through the cover sheet with a blunt object such as a small hammer, spoon, screw driver handle, car key or pestle. Take care not to damage the matrix.

When the **green leaf extract is visible on the back** of the FTA matrix the collection process is complete.

Remove plant residue from card, ensure that no large pieces of plant tissue remain adhered to the FTA card (Figure 3).

Fill out the sampling form.

Allow the FTA card to air dry for a minimum of one hour at room temperature.

Store **dry** FTA cards separately in a paper envelope or plastic zip-lock bag.

Collect cards + Sampling Forms and return to local coordinator.

Figure 3 shows a card after processing in the laboratory so you can see what the next stage will be



Figure 3. FTA card containing samples for SSR analysis. DNA has been extracted from the 2mm disks punched from each sample.

Materials needed:

Knife/Scissors for sampling the lesion (clean after use!)

Whatman FTA plant-card

Pen/Pencil

Blunt object such as a small pestle, small hammer etc.

Zip lock bag to store used and air-dried FTA cards

Related You Tube videos:

1. <http://www.youtube.com/watch?v=Gir56iYspTE> (Quick and dirty)

2. http://www.youtube.com/watch?v=BzQ-DEG9_aE (slow and for a lab environment)

Please send completed cards to:

Dr. Jean Ristaino

Lab Manager: Amanda Saville

2323 Plant Sciences Building, 840 Oval Drive

Campus Box 7825

North Carolina State University

Raleigh, NC 27606

Lab phone 515-6808

Office 515-3257

Jean_Ristaino@ncsu.edu

acsavill@ncsu.edu

Include information on location/date of collection, host, and host variety (if known).